

TE-SQ1

Introduction



Contents



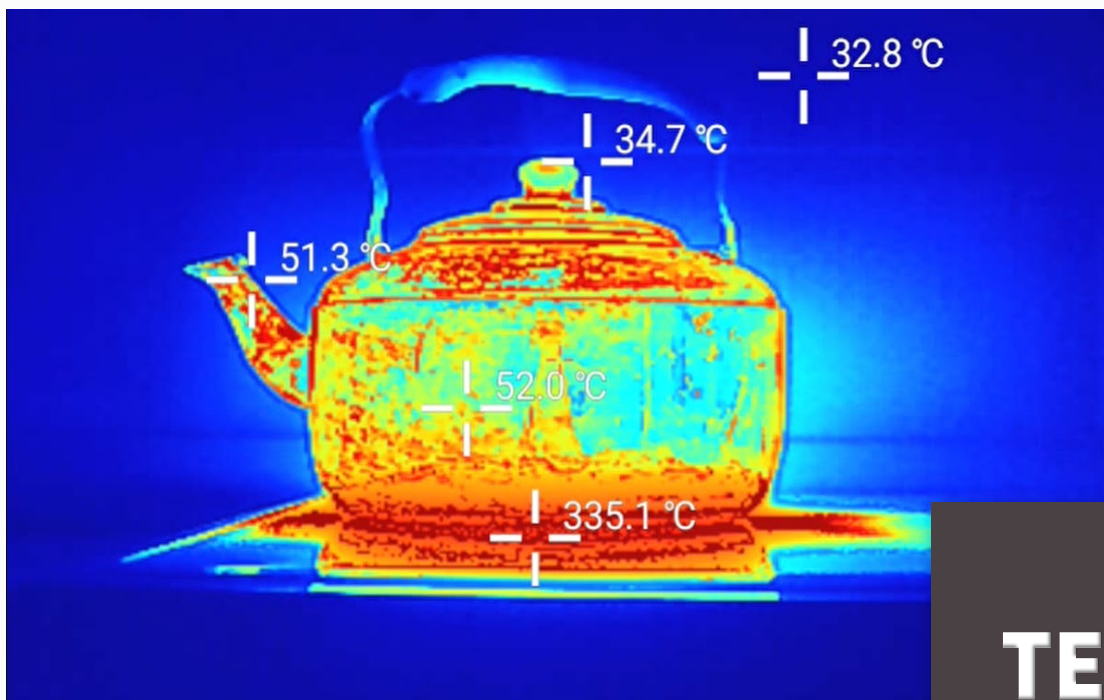
- | | |
|-----------------|------------------|
| 1. Introduction | 4. Specification |
| 2. Functions | 5. How to use |
| 3. Features | 6. Comparison |

Portable Thermal Imager

Excellent performance for measuring abnormal temperatures in electrical diagnostics and maintenance applications



TE-SQ1



1. High Resolution

QVGA high quality of Thermal Images
384 X 288 Resolution, NETD 0.055°C
i3system's own microbolometer sensor



2. Thermal and Visible images

Save both Thermal and Visible images
Various Image Views(50:50, Twin, Overlay)

TE-SQ1

Main Functions



3. Data Sharing

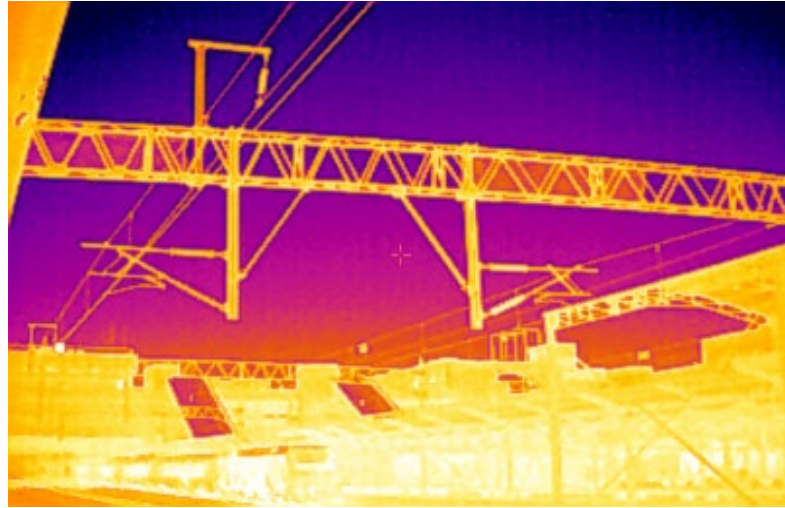
Wi-Fi connection for Data sharing
Software based on Android OS



4. PDF Report Writer

It generates thermal electrical
inspection report(PDF) and save it





Features

Portable Thermal Imager



Very High Resolution(384 X 288, 110,592 pixels)

576% higher resolution compared to competing models(160 X 120, 19,200 pixels)



5-inch Large touch screen

Easily identify overheated parts, leaks in plumbing systems, and malfunctioning mechanical systems



Mass Storage and micro-SD supported

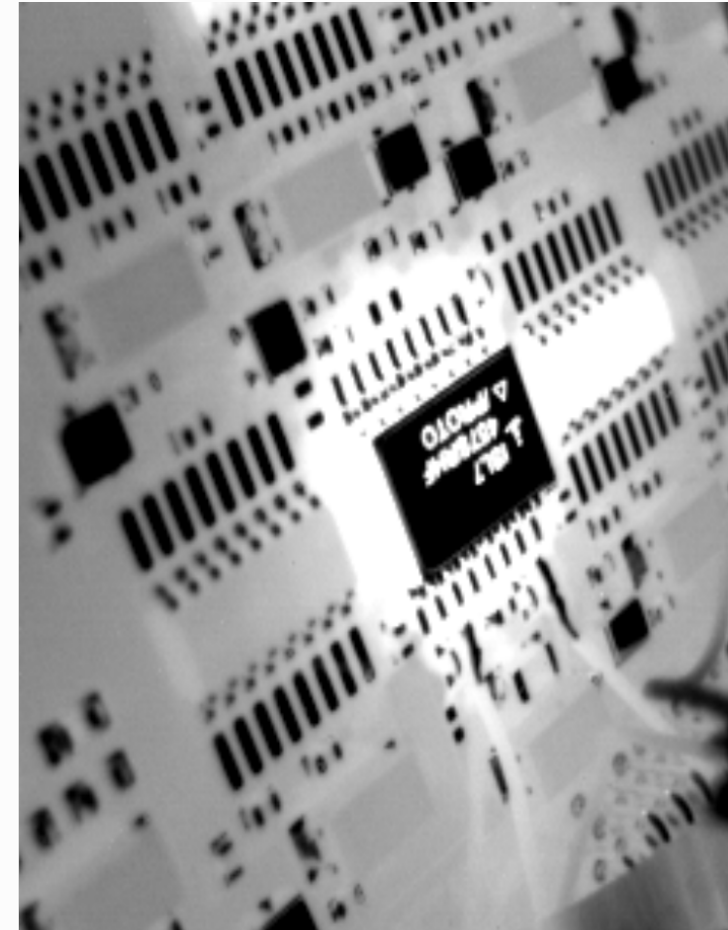
32GB internal memory(at least 10,000 images saved), micro-SD external memory supported



Convenience by high compatibility

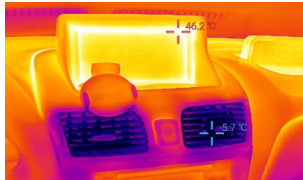
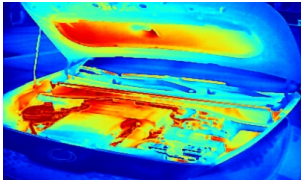
Wi-Fi connection for data sharing and screen mirroring, micro-HDMI output for external display

TE-SQ1



Specification

Portable Thermal Imager



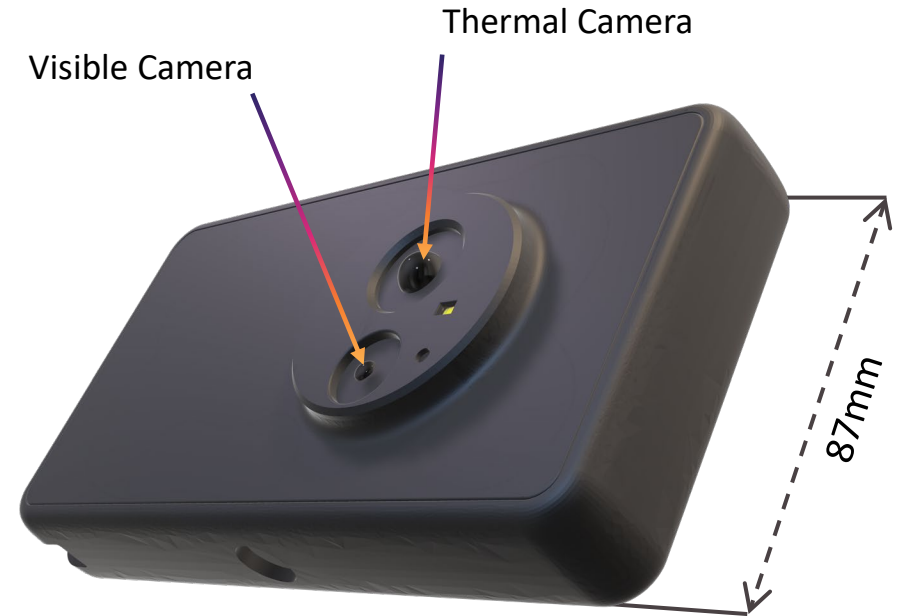
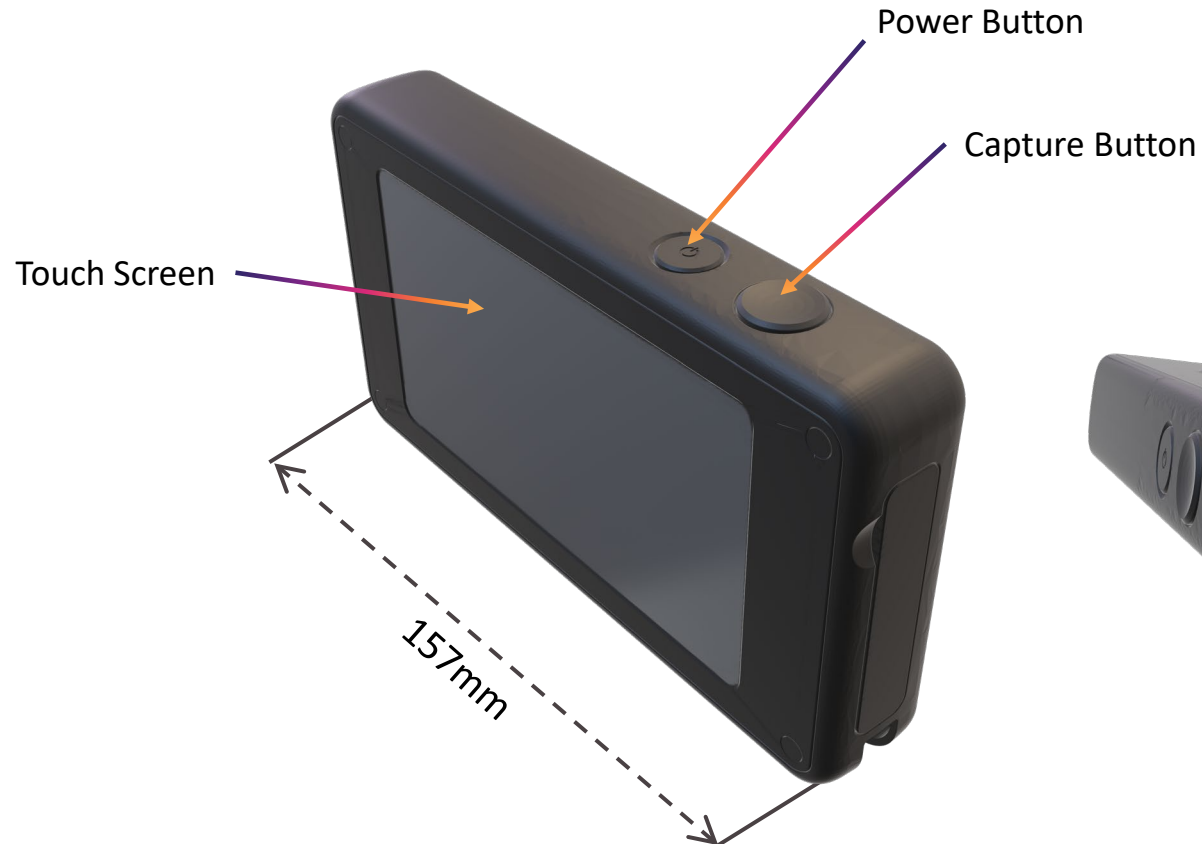
| TE-SQ1 Specification | |
|---------------------------|--|
| Detector | Micro-Bolometer |
| Array Format, Pixel Pitch | 384x288, 12 μ m |
| NETD | $\leq 55\text{mK@F/1, 300K}(20^{\circ}\text{C}\sim 30^{\circ}\text{C})$ |
| Operability | $\geq 99.0\%$ |
| Spectral Range | 8~14 μ m |
| Lens | 5.7mm, f/1.1, MF |
| Field of View | 38°(H) x 29°(V) – 47°(D) |
| Frame Rate | 9 Hz |
| Display | 5 inch touch screen |
| Temp. Range | -40°C ~ 350°C |
| Accuracy | 0°C~100°C: $\pm 3^{\circ}\text{C}$, 100°C~350°C: $\pm 3\%$ (Ambient 15°C~35°C, Object temp. above 0°C) |
| Output | micro-HDMI |
| Operation Temp. | -10°C ~ 50°C |
| Storage | Internal 32GB, micro-SD compatible |
| Dimension | 157mm x 87mm x 25 mm, 375g |
| Battery | Li-Ion(internal), 4200mA |

Turn on/off: Hold the power button for 2~3 seconds

Charge: Connect USB-C cable to charger

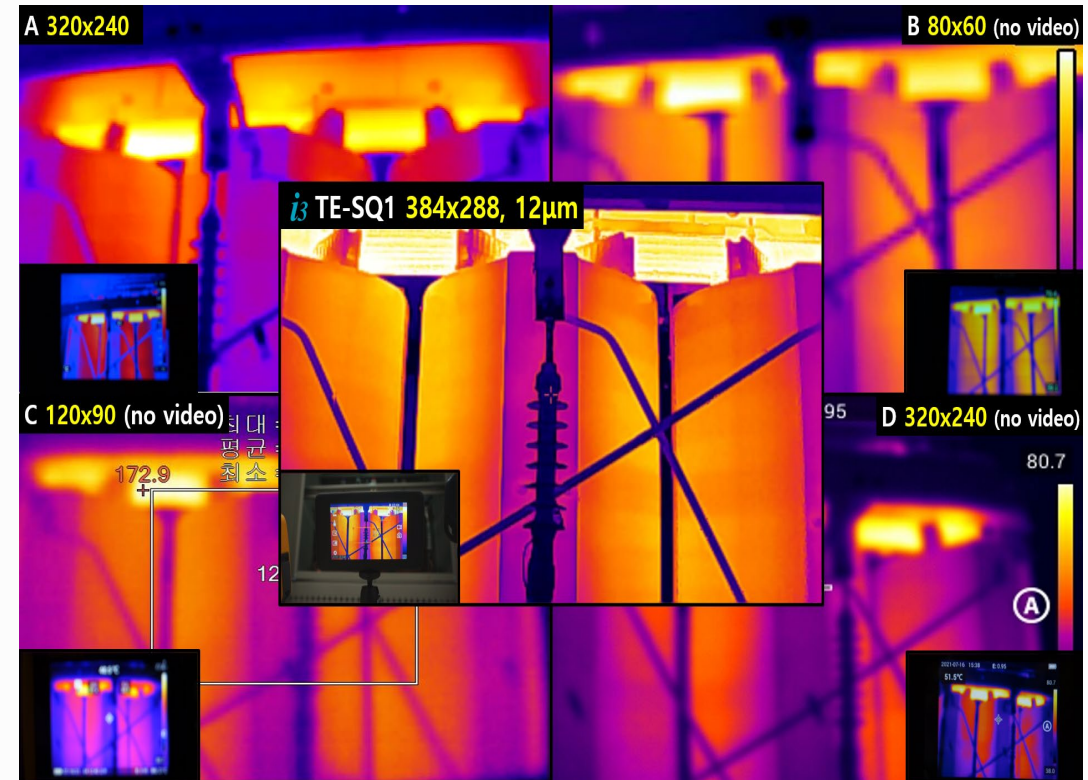
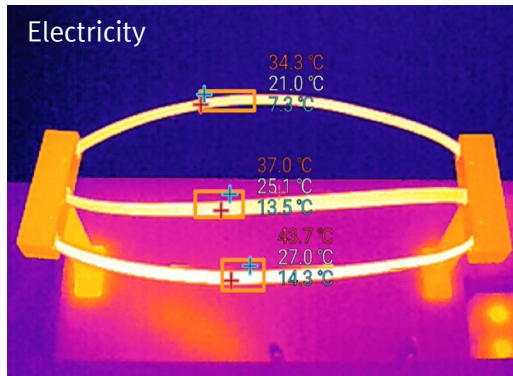
Display Connection: Connect micro-HDMI adapter with HDMI

External Memory: insert micro-SD memory to the micro-SD slot



Amazing Performance

Accurate, Efficient, Safe and Fast Thermal Inspection



TE-SQ1